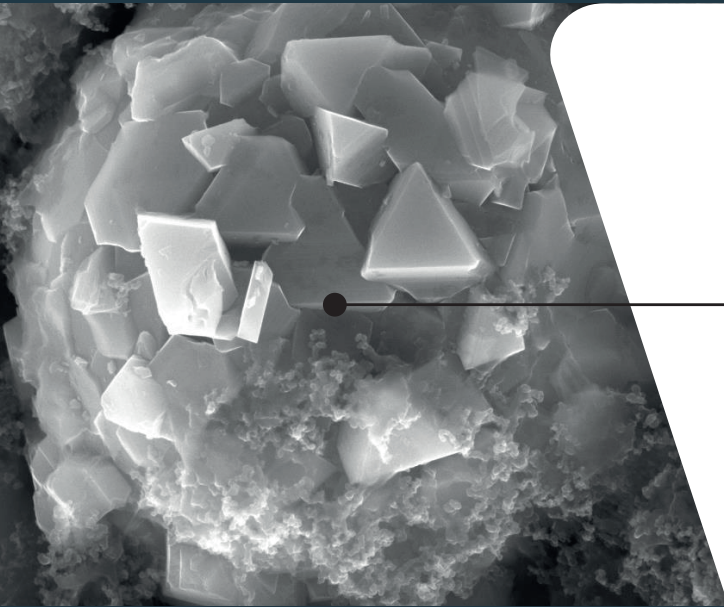




# **GGO Battery Additive**

# SEM Images

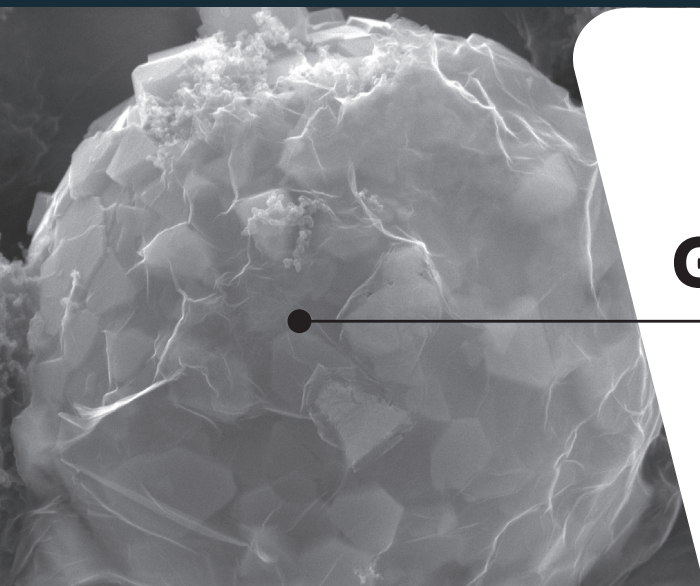
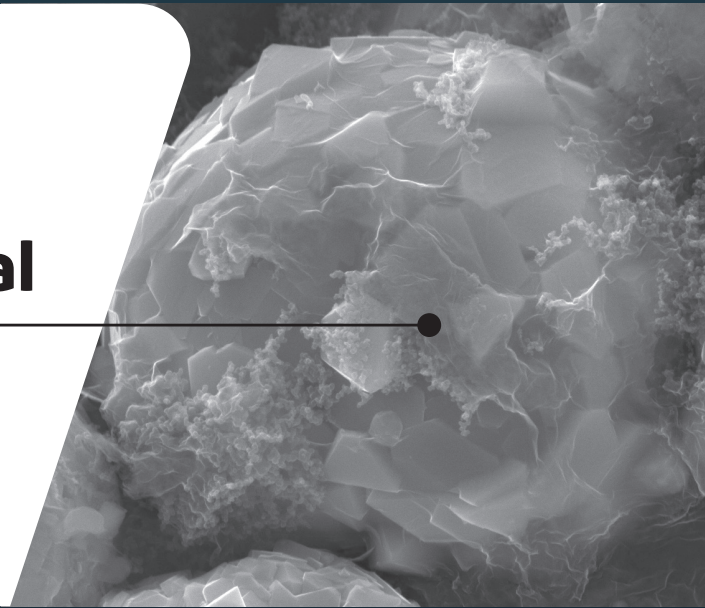
Active material:Carbon:Binder 92:4:4



**Polycrystal**

## Graphene Coated Polycrystal

0.5 wt% GGO



## Graphene Coated Polycrystal

1.5 wt% GGO

# GGO Battery Additive

Danish Graphene manufactures GGO using a sustainable electrochemical process. Graphene materials can be supplied as dispersions (aqueous and organic), concentrated pastes, or masterbatches. Products can be directly added to e.g. electrode slurries, coatings, adhesives, etc.

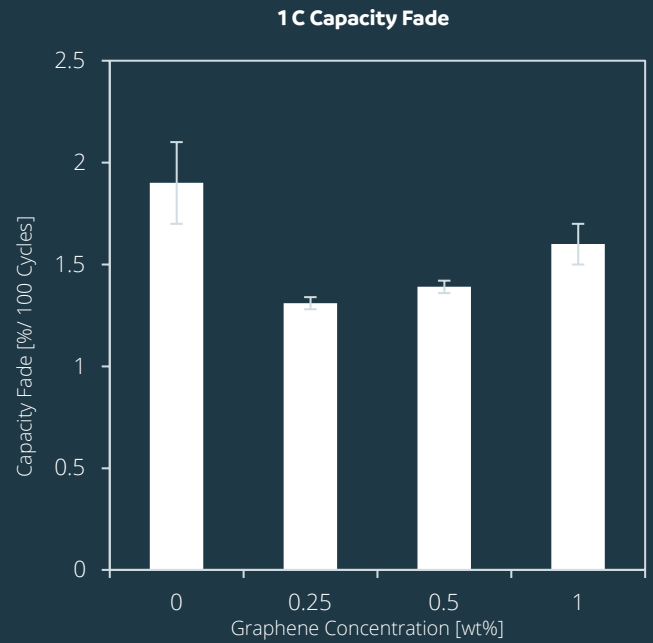





Figure: Half-cell with LMNO positive electrode containing 0, 0.25, 0.5, and 1.0wt% GGO plotted against the 1 C capacity fade in percentage loss over 100 cycles



Increase active material content by reducing carbon and binder concentration.



Electrical conductive carbon mesh effectively increases current distribution.



Chemical modifications of graphene enhances lithium ion conductivity and adhesive properties.



Sustainable GGO suitable for aqueous electrode casting.

